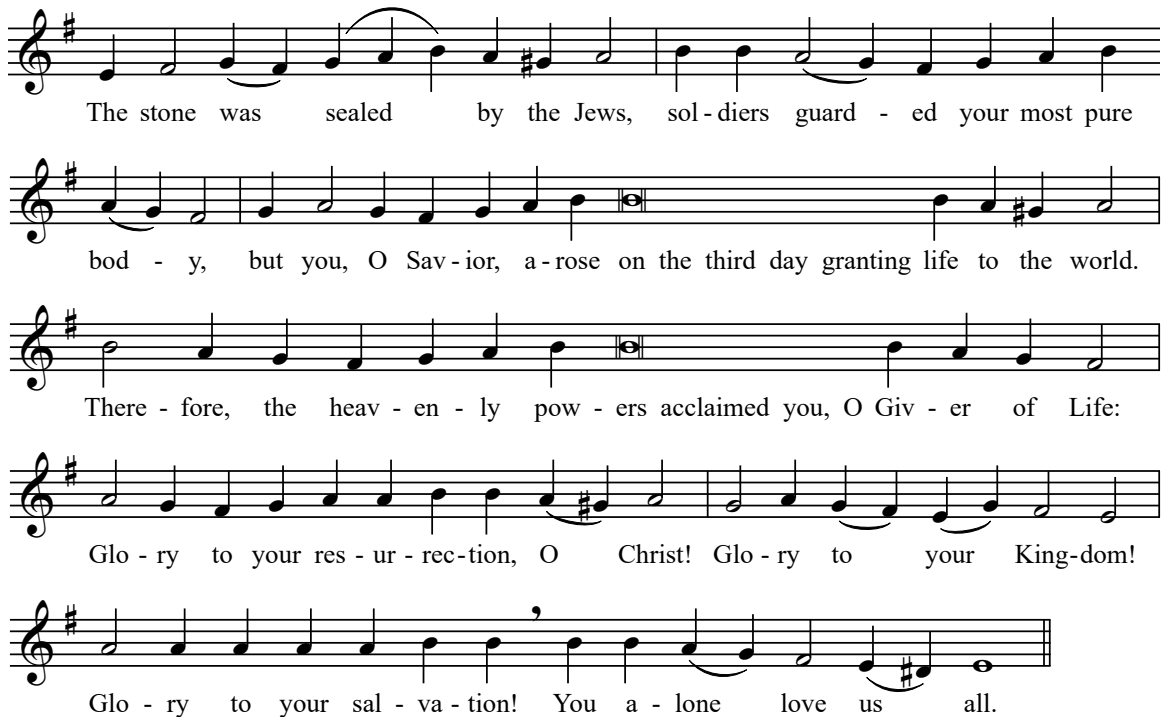


Divine Liturgy, November 21, 2021
TWENTY-SIXTH SUNDAY AFTER PENTECOST

THE ENTRANCE OF OUR MOST BLESSED LADY, THE THEOTOKOS AND EVER-VIRGIN MARY INTO THE TEMPLE. The day after the dedication of the basilica of the New St. Mary's, built near the wall of the temple in Jerusalem, that dedication is celebrated which the future mother of God showed of her own accord toward God from her infancy. By the movement of the Holy Spirit she was immaculate, filled with grace at her conception.

Troparion of the Resurrection - *Tone 1*

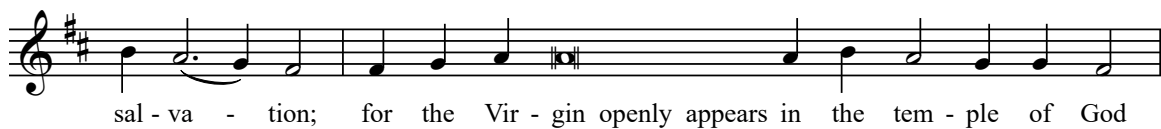


The stone was sealed by the Jews, soldiers guard - ed your most pure
bod - y, but you, O Sav - ior, a - rose on the third day granting life to the world.
There - fore, the heav - en - ly pow - ers acclaimed you, O Giv - er of Life:
Glo - ry to your res - ur - rec - tion, O Christ! Glo - ry to your King - dom!
Glo - ry to your sal - va - tion! You a - lone love us all.

Troparion of the Entrance of the Theotokos - *Tone 4*



To - day is the prel - ude of God's be - nev - o - lence and the her - ald of our



sal - va - tion; for the Vir - gin openly appears in the tem - ple of God

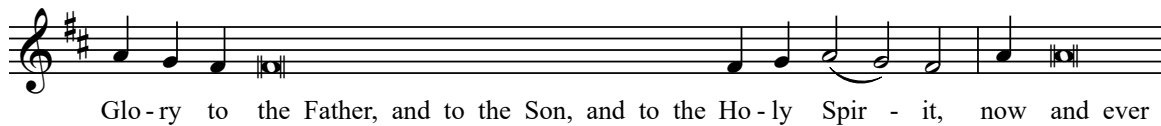


and fore-tells Christ to all. Let us al - so with full voice ex - claim to her:



Re - joice, fulfillment of the Cre - a - tor's plan.

Cantor



Glo - ry to the Father, and to the Son, and to the Ho - ly Spir - it, now and ever



and for - ev - er. A - men.

Kontakion of the Entrance - Tone 4



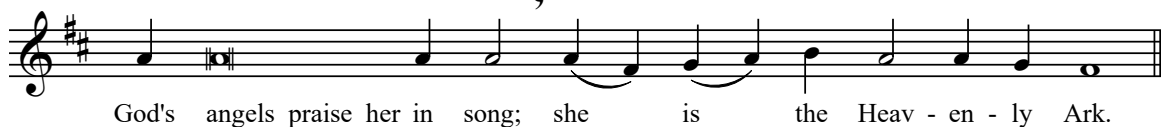
The most pure Tem - ple of the Sav - ior, the most precious Bri - dal Cham - ber



and Vir - gin, the Treas - u - ry of the glo - ry of God, is led



to - day in - to the house of the Lord, bring - ing grace in the Spir - it of God.



God's angels praise her in song; she is the Heav - en - ly Ark.

Prokeimenon of the Resurrection - Tone 1 (Psalm 32:22,1):

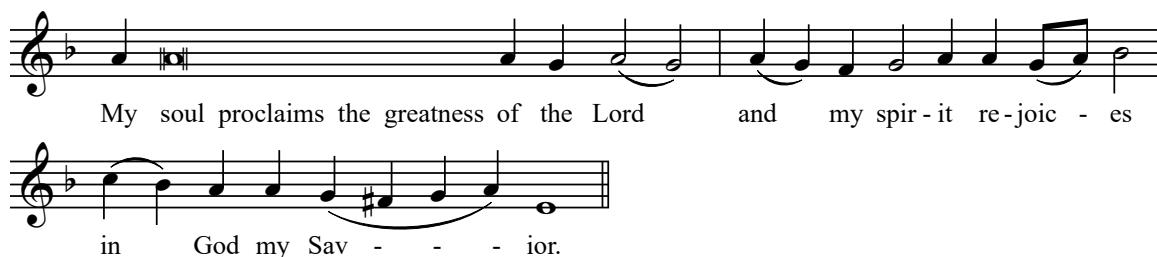


May your mer - cy, O Lord, be up - on us, may your mer - cy
be up - on us who have placed our hope in you.

Verse: Rejoice in the Lord, you righteous ones; praise from the upright is fitting.

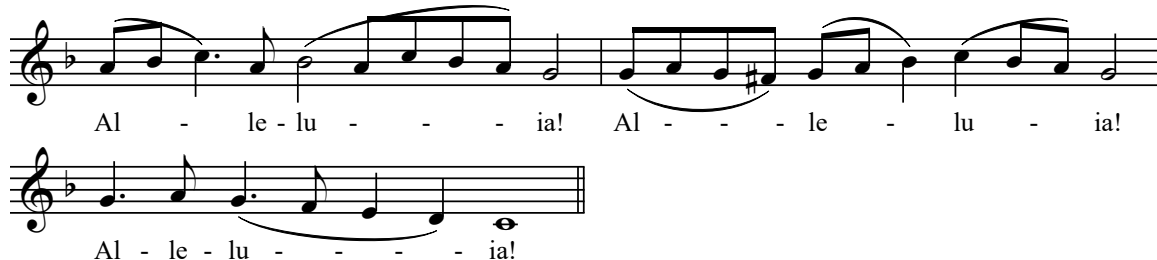
and then immediately:

Prokeimenon of the Entrance - Tone 3 (Luke 1:46-48):



My soul proclaims the greatness of the Lord and my spir - it re-joic - es
in God my Sav - - - ior.

Alleluia of the Resurrection - Tone 1 (Psalm 17:48,51):



Al - le - lu - - - ia! Al - - - le - lu - ia!
Al - le - lu - - - ia!

Verse: God grants me vindication and subdues peoples under me.

Verse: He has given great victories to his king and has shown love for David, his anointed, and his descendants forever.

and then immediately:

Alleluia of the Entrance - Tone 8 (Psalm 44:11,13):



Al - le - lu - ia! Al - le - lu - - - ia! Al - - - le - lu - ia!

Verse: Listen, O daughter, and see and incline your ear.

[**Verse:** The rich among the people will seek your favor.]

Instead of "It is truly proper . . ."

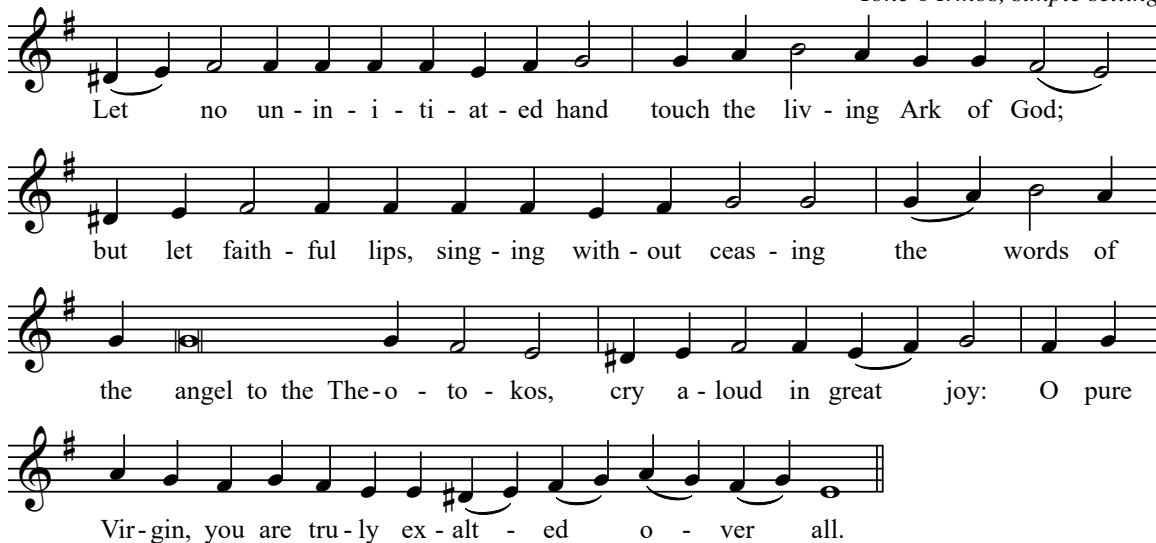
Magnification:



The an - gels were struck with a-maze - ment, be-hold - ing the en-trance
of the Most Pure; see - ing how the Vir - gin en-tered in - to the
Ho - ly of Ho - lies.

Irmos:

Tone 6 Irmos, simple setting



Let no un - in - i - ti - at - ed hand touch the liv - ing Ark of God;
but let faith - ful lips, sing - ing with - out ceas - ing the words of
the angel to the The - o - to - kos, cry a - loud in great joy: O pure
Vir - gin, you are tru - ly ex - alt - ed o - ver all.

Communion Hymn for Sundays (Psalm 148:1):

B



Praise the Lord from the heav - - ens, praise him in the high - est,



praise him in the high - est, praise the Lord from the heav - ens.

Refrain



Al - le - lu - ia! Al - le - lu - ia! Al - le - lu - - - ia!

Communion Hymn for the Entrance (Psalm 115:4):

B



I shall take the chal - ice, the chal - ice of sal - va - tion,



and call up - on the name of the Lord, the name of the Lord.

Refrain



Al - le - lu - ia! Al - le - lu - ia! Al - le - lu - - - ia!